

DISCOLORATION OF THE TOOTH AFTER USING MINOCYCLINE.

Whitening of the tooth using the walking bleach method.

Dr n. med. Jacek Bilbin

Patient 9 years old had injury 7 months earlier . Tooth 11 was broken and tooth filling was placed . After 2 months , the fistula appeared in the root plan. The dentist has prescribed an antybiotic orally. When the patient came to our office, she complained about the pain of this tooth.



10.08.2017



10.08.2017



The X ray with the gutta percha point

Due to the young age of the patient and uncompleted root development , it was decide to treat the biological tooth with the use of apical papilla stem cells. After initial preparation of the root canal tribiotic paste was placed (according to the original recipe)

*Canal:
Irrigated with NaOCl 5.25%
Disinfected with a combination of three antibiotics
(metronidazol, minocyclin, ciprofloxacin)

Re entered after 26 days; Stimulation
of bleeding and coagulum within the vital
Tissue in the canal*

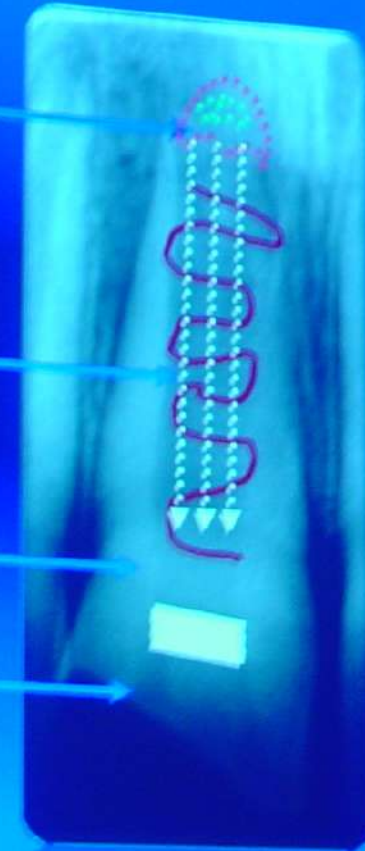
M Trope

Apical Papilla Stem Cells

+ Scaffold (coagulum)?

Antibiotic paste

MTA



M. Trope

After 28 days tooth was asymptomatic and fistula disappeared, but the tooth has been significantly discolored.



07.09.2017



07.09.2017

Stimulation of bleeding and coagulum with the vital tissue in the canal has been done. Apical third was sealed with MTA.



07.09.2017

Revascularization Protocol

Coronal third sealed with MTA

Follow-up

"continued root development and healing of apical tissues within the next two years....."

Banchs F., Trope M. J Endodon 2004; 30:196

At the next appointment root canal was filled with ACTIVA – bioceramic.



Healing of apical root



4 months follow up



7 months follow up

But color was still unacceptable that is why we decided bleach this tooth.



ACTIVA was removed from pulp chamber . Sodium perborate with 3% hydrogen peroxide was placed for 1 week.





After 1 week sodium perborate with distilled water





After 3 weeks of walking bleach.





ACTIVA is translucent and dark color from canal was visible that is why we decided remove 3 mm of filling and replaced with Total Fill



Pulp chamber was filled with Biodentine and Estelite OA2

MTA

ACTIVA

Total Fill

Biodentine

Estelite OA 1





The final effect



Before bleaching



After bleaching



23.10.2018